

A person wearing a white headscarf and dark clothing is walking across a vast desert landscape, leading a brown camel. The camel is carrying a yellow saddlebag. They are walking on a sand dune with distinct ripples. The background shows more sand dunes under a clear sky.

Hego®

LUXURY

ICONIC  
Broadloom Luxury Carpet



INSPIRED BY NATURE

DELIVERED BY



LUXURY

THE ICONIC COLLECTION BY HEGO IS A ONE OF ITS KIND ULTIMATE IN DURABILITY AND SOPHISTICATION. THE COLOR PALETTE INSPIRED BY NATURE SHOWCASES SHADES OF CREAM ,BEIGE & GREY THROUGH TO GORGEOUS DESIGN PATTERNS HAS GIVEN A CONTEMPORARY COLOR TREATMENT TO CREATE BEAUTIFUL, TIMELESS CARPET COLLECTION.

A HIGH-SPECIFICATION, HIGH-PERFORMING POLYESTER WITH MANY COMMERCIAL APPLICATIONS INCLUDING PUBLIC SPACES, CORRIDORS, SUITES, MEETING SPACES AND BOUTIQUE HOTELS.





LUXURY

1401-LIMESTONE





LUXURY



## 1401-LIMESTONE

IMAGES ARE FOR VISUAL PRESENTATION ONLY  
PLEASE REFER TO PHYSICAL CATALOGUE FOR  
ACTUAL COLORS & DESIGN





The Hego logo is located in the top left corner. It features the word "Hego" in a stylized, handwritten-style font. The "H" is large and the "e" is small. There is a small trademark symbol (TM) to the right of the "o". A thin horizontal line is drawn under the "e".

Hego™

LUXURY

1401-LIMESTONE

IMAGES ARE FOR VISUAL PRESENTATION ONLY  
PLEASE REFER TO PHYSICAL CATALOGUE FOR  
ACTUAL COLORS & DESIGN







LUXURY



1402-DESERT





LUXURY



## 1402-DESERT

IMAGES ARE FOR VISUAL PRESENTATION ONLY  
PLEASE REFER TO PHYSICAL CATALOGUE FOR  
ACTUAL COLORS & DESIGN





Hego™

LUXURY

## 1402-DESERT

IMAGES ARE FOR VISUAL PRESENTATION ONLY  
PLEASE REFER TO PHYSICAL CATALOGUE FOR  
ACTUAL COLORS & DESIGN





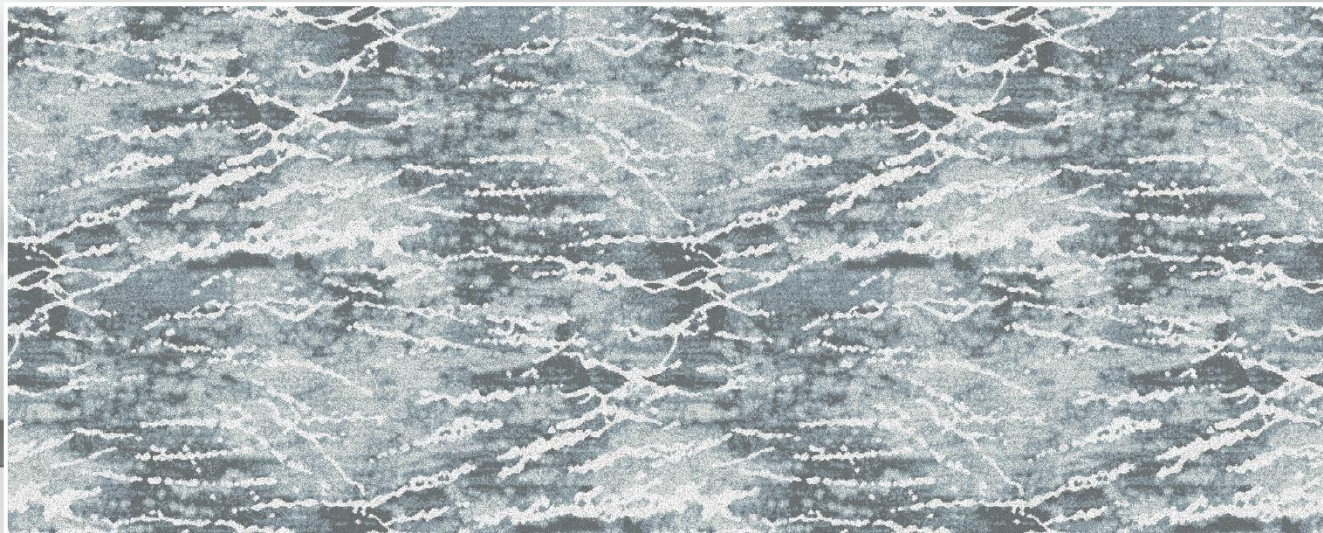


LUXURY

A full-page photograph of an astronaut in a white spacesuit walking on the lunar surface. The astronaut is seen from the side, moving towards the right. The ground is a light gray, dusty surface with some darker patches. A long, dark shadow of the astronaut is cast on the ground to the left. The horizon is a straight line in the distance, and the sky is a deep, dark blue-black.

1403-MOON WALK





## 1403-MOON WALK

IMAGES ARE FOR VISUAL PRESENTATION ONLY  
PLEASE REFER TO PHYSICAL CATALOGUE FOR  
ACTUAL COLORS & DESIGN





Hego™

LUXURY



## 1403-MOON WALK

IMAGES ARE FOR VISUAL PRESENTATION ONLY  
PLEASE REFER TO PHYSICAL CATALOGUE FOR  
ACTUAL COLORS & DESIGN





LUXURY



1404-WHITE SAND





LUXURY



## 1404-WHITE SAND

IMAGES ARE FOR VISUAL PRESENTATION ONLY  
PLEASE REFER TO PHYSICAL CATALOGUE FOR  
ACTUAL COLORS & DESIGN







LUXURY

## 1404-WHITE SAND

IMAGES ARE FOR VISUAL PRESENTATION ONLY  
PLEASE REFER TO PHYSICAL CATALOGUE FOR  
ACTUAL COLORS & DESIGN





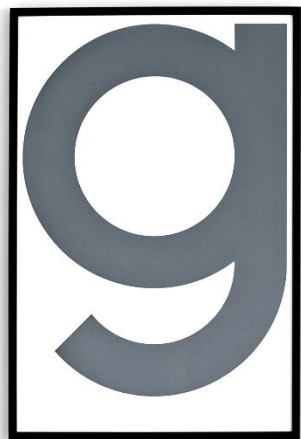


LUXURY



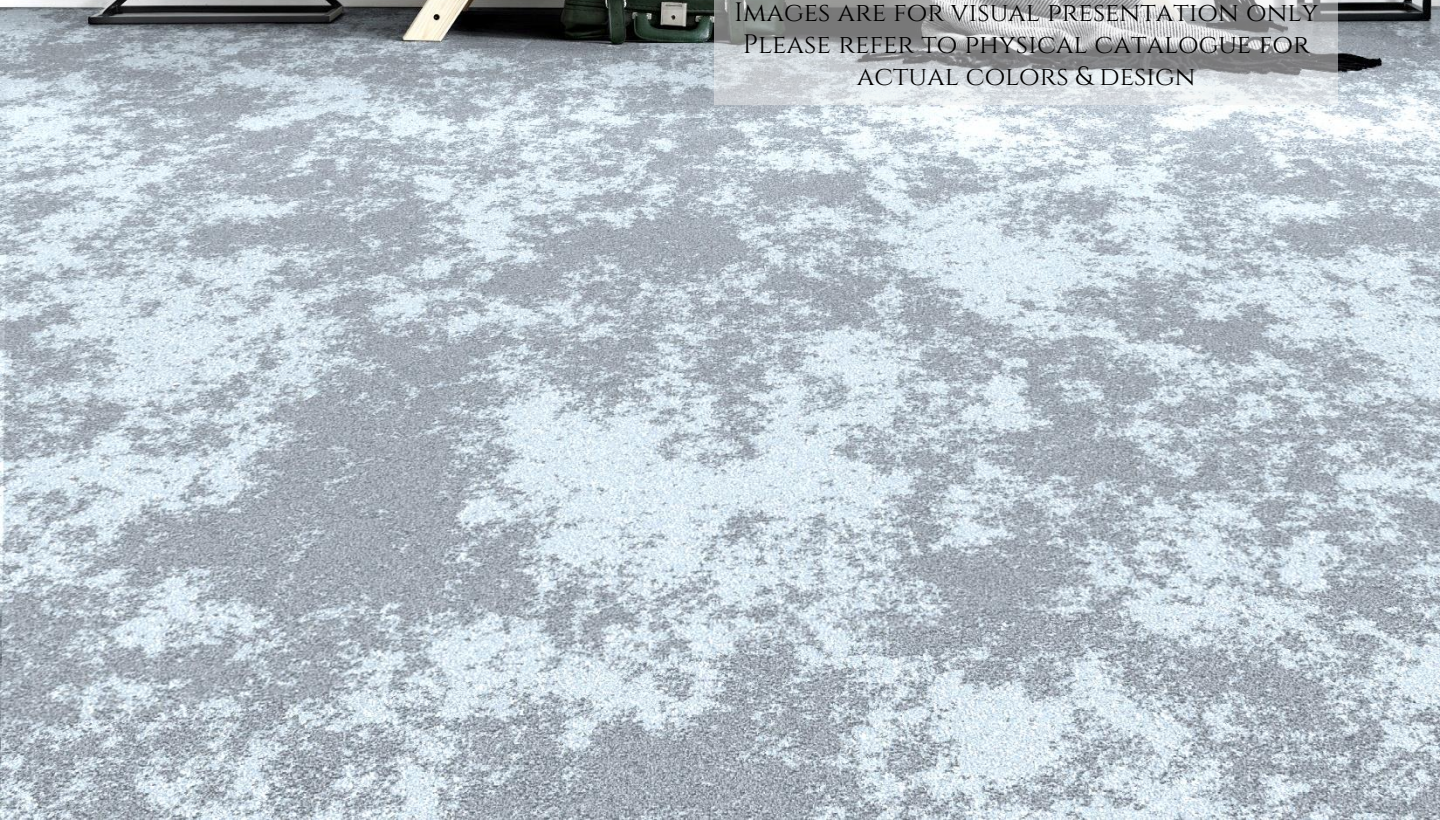
1405-SKY BLUE





1405-SKY BLUE

IMAGES ARE FOR VISUAL PRESENTATION ONLY  
PLEASE REFER TO PHYSICAL CATALOGUE FOR  
ACTUAL COLORS & DESIGN





Hego™

LUXURY

1405-SKY BLUE

IMAGES ARE FOR VISUAL PRESENTATION ONLY  
PLEASE REFER TO PHYSICAL CATALOGUE FOR  
ACTUAL COLORS & DESIGN







LUXURY

1406-WHEAT LAND





## 1406-WHEAT LAND

IMAGES ARE FOR VISUAL PRESENTATION ONLY  
PLEASE REFER TO PHYSICAL CATALOGUE FOR  
ACTUAL COLORS & DESIGN





Hego™

LUXURY



## 1406-WHEAT LAND

IMAGES ARE FOR VISUAL PRESENTATION ONLY  
PLEASE REFER TO PHYSICAL CATALOGUE FOR  
ACTUAL COLORS & DESIGN





LUXURY

A high-angle, top-down view of a spiral staircase. The staircase is constructed from a dark, polished material, possibly metal or stone, with ornate balusters. The steps are light-colored, creating a rhythmic pattern as the spiral descends. In the center of the spiral, a person's arm and hand are visible, reaching out towards the center, adding a sense of scale and human presence to the architectural shot.

1407-COBALT GREY





LUXURY



## 1407-COBALT GREY

IMAGES ARE FOR VISUAL PRESENTATION ONLY  
PLEASE REFER TO PHYSICAL CATALOGUE FOR  
ACTUAL COLORS & DESIGN







LUXURY

## 1407-COBALT GREY

IMAGES ARE FOR VISUAL PRESENTATION ONLY  
PLEASE REFER TO PHYSICAL CATALOGUE FOR  
ACTUAL COLORS & DESIGN





## TECHNICAL SPECIFICATIONS

FIBRE	100% POLYESTER
CONSTRUCTION	MACHINE TUFTED BROADLOOM
DYE METHOD	SOLUTION DYED
PILE WEIGHT	1750 GSM +/-5%
TOTAL HEIGHT	10-11 MM
BACKING	ACTION FLEECE
STANDARD ROLL WIDTH	4 MTR
PROTECTIVE TREATMENT	ANTI SOIL

NOTE:

1. DUE TO CARPET MANUFACTURING PROCESS, MASS SPECIFICATION ARE SUBJECT TO  $\pm 5\%$  VARIATION
2. SHADING OR PILE REVERSAL TS NATURE OF CUT PILE CARPET AND IT IS NOT MANUFACTURING DEFECT
3. COLOR MAY SLIGHTLY VARY FROM ONE DYE LOT TO ANOTHER DYE LOT
4. WE RESERVE TO AMEND THE ABOVE SPECIFICATION WITHOUT PRIOR NOTICE DUE VARIABLES IN RAW MATERIAL SUPPLIES



SOUND  
INSULATION



HEAT  
INSULATION



ANTI-STATIC



COLORFAST



WEARPROOF



COMMERCIAL | HOSPITALITY | BANQUETS | HOTELS | RESIDENTIAL

Hego®

LUXURY