



Cut Loop

MILAN

Wall To Wall Carpet



EXPERIENCE THE PERFECT BLEND OF DESIGN, TEXTURE, AND DURABILITY WITH THIS CUT & LOOP CARPET, CRAFTED TO ADD CHARACTER AND SOPHISTICATION TO ANY INTERIOR.

THE CUT & LOOP CONSTRUCTION COMBINES CUT PILE FOR SOFTNESS AND COMFORT WITH LOOP PILE FOR STRENGTH AND DEFINITION, CREATING A UNIQUE PLAY OF HEIGHTS AND TEXTURES. THIS TECHNIQUE NOT ONLY ENHANCES THE GEOMETRIC PATTERNS, MAKING THEM APPEAR MORE THREE-DIMENSIONAL AND STRIKING, BUT ALSO ENSURES EXCELLENT PERFORMANCE IN HIGH-TRAFFIC AREAS.

AVAILABLE IN FIVE VERSATILE COLORWAYS, THE COLLECTION OFFERS CHOICES THAT SEAMLESSLY BLEND INTO BOTH MODERN AND CLASSIC INTERIORS. MADE FROM THE HIGHEST QUALITY POLYPROPYLENE YARN, THE CARPET DELIVERS OUTSTANDING RESILIENCE, STAIN RESISTANCE, AND EASY MAINTENANCE, WHILE RETAINING A LUXURIOUS FEEL.

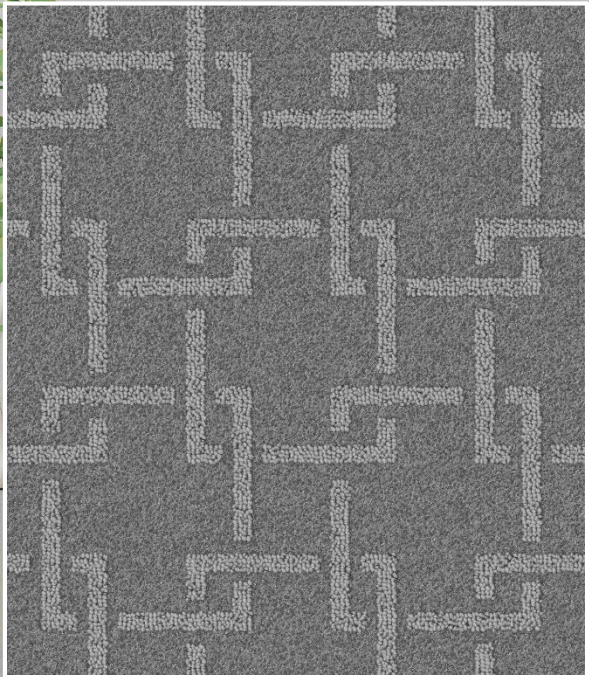
A VERSATILE FLOORING SOLUTION, THIS CUT & LOOP CARPET IS IDEALLY SUITED FOR LIVING ROOMS, BEDROOMS, OFFICES, HOSPITALITY SPACES, AND MORE, BRINGING TOGETHER COMFORT, STYLE, AND LONG-LASTING BEAUTY.



6021-BROWN



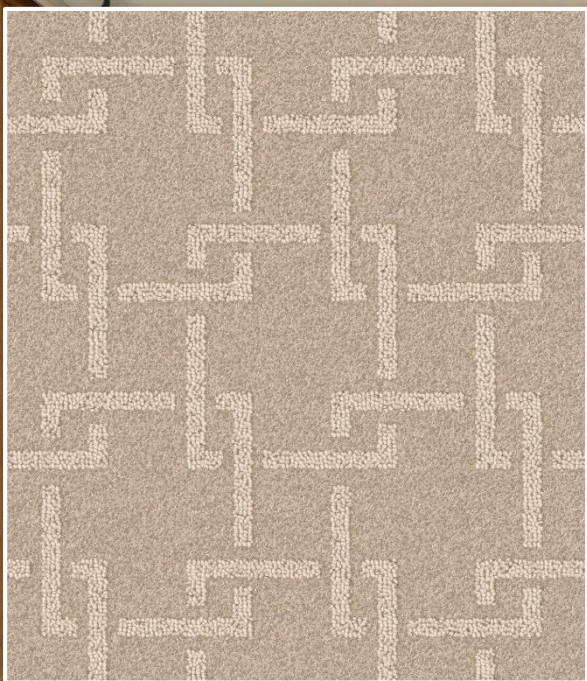
6021-BROWN



6022-DARK GREY



6022-DARK GREY

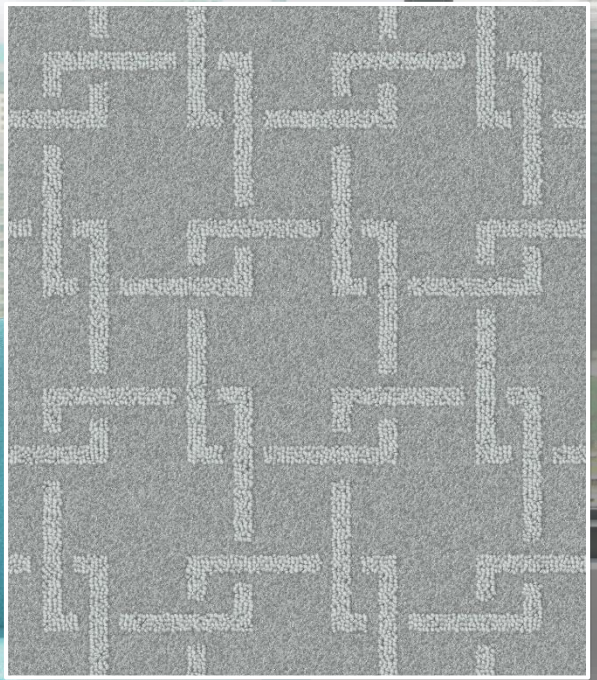


6023-BEIGE



6023-BEIGE

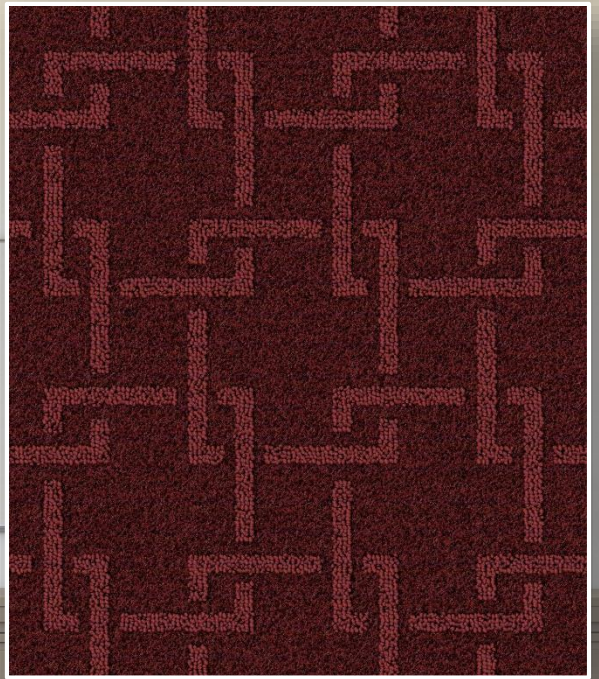




6024- L. GREY



6024- L. GREY



6025- MAROON



6025- MAROON

TECHNICAL SPECIFICATIONS

CONSTRUCTION	LEVEL CUT LOOP
FIBER	100% OLEFIN
DYE METHOD	SOLUTION DYED
TUFFING GAUGE	1/10"
PILE WEIGHT	1200 GSM \pm 5%
TOTAL WEIGHT	2100 GSM \pm 5%
PILE HEIGHT	7.5-8 MM \pm 5%
TOTAL HEIGHT	9.5-10 MM \pm 5%
CARPET WIDTH	3.66 MM
ROLL LENGTH	25-30 MTR.
BACKING	ACTION BACK

NOTE:

1. SPECIFICATIONS ARE SUBJECT TO CHANGE TO IMPROVE PRODUCT & PERFORMANCE.
2. SLIGHT COLOR VARIATION MAY OCCUR FROM DYE LOT TO DYE LOT.
3. SLIGHT BOWING COULD BE VISIBLE AND SHOULD NOT BE TREATED AS A MANUFACTURING DEFECT.
4. PRODUCT IMAGES ARE FOR REPRESENTATION PURPOSE ONLY; ACTUAL PRODUCT MAY DIFFER.



BRAND AMBASSADOR

"ALOK NATH"

HEGO

"YOUR STYLE PARTNER FOR EVERY SPACE"



“MILAN TEACHES
US THAT BEAUTY IS FOUND IN THE
DETAILS—WHETHER IN DESIGN,
CUISINE, OR LIFE.”

